

**WALINGA<sup>®</sup>**  
INC.

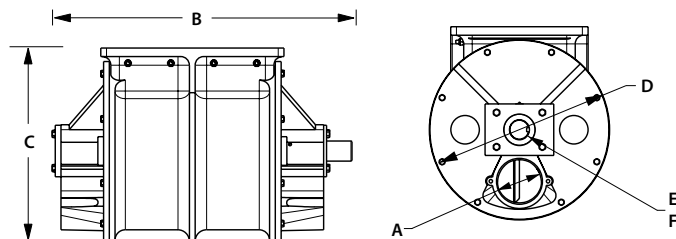
AIRLOCKS

## AIRLOCKS

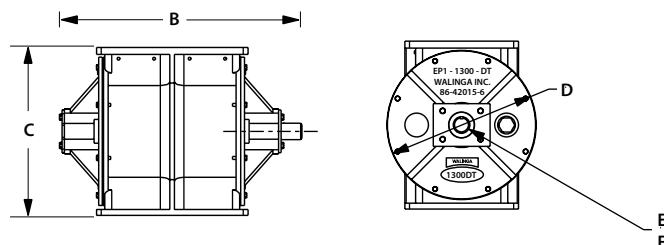
Walinga has been manufacturing rotary vane airlocks since the early 80's. We pride ourselves in quality heavy duty blow through and drop through style airlocks.

Whether you're looking for a rotary vane airlock to complete your milling operation or to repair a grain vac, Walinga is sure to have the right one to suit your needs. We offer "Drop Thru" styles and "Blow Thru" styles. We also offer different types of rotors. From solid to stainless steel tips to rubber bladed tips. Walinga also offers round or square mounting surfaces.

### BLOW THRU AIRLOCK



### DROP THRU AIRLOCK



MODEL	A	B	C	D	E	F	WEIGHT	CAPACITY	
BLOW THRU	Inlet/Outlet Dia.	LENGTH	HEIGHT	DIA.	SHAFT Dia.	KEYWAY	POUNDS	CUBIC FT/REV (cfr)	LITRE/REV
1314-4	4	25.5	16.875	15.75	1.25	0.313	270	0.8	23
1314-5	5	25.5	16.875	15.75	1.25	0.313	270	0.8	23
1618-6	6	29.375	18.625	18.5	1.375	0.313	480	1.6	45
DROP THRU									
1210DT		19	16.125	14.25	1.75	0.375	223	0.55	16
1314DT		25.313	17.75	15.75	1.75	0.375	340	0.8	23
1618DT		27.45	21	18.5	1.75	0.375	521	1.6	45
2224DT		37.14	28	26	2.5	0.625	1481	4.44	126

Due to continuous product development, specifications are subject to change without notice.



**www.walinga.com**



**Head Office:**  
R.R. #5, Guelph, ON.  
Canada N1H 6J2  
Tel (888) 925-4642  
Fax (519) 824-5651

**Ontario:**  
938 Glengarry Cres.  
Fergus, Ontario  
Canada N1M 2W7  
Tel: (519) 787-8227  
Fax: (519) 787-8210

**Manitoba:**  
P.O. Box 1790  
70 3rd Ave. N.E.  
Carman, Manitoba  
Canada R0G 0J0  
Tel (204) 745-2951  
Fax (204) 745-6309

**Saskatchewan:**  
P.O. Box 849  
220 Frontage Rd.  
Davidson, Saskatchewan  
Canada S0G 1A0  
Tel (306) 567-3031  
Fax (306) 567-3039

**Michigan:**  
1190 Electric Ave.  
Wayland, MI.  
USA 49348  
Tel (800) 466-1197  
Fax (616) 877-3474

**Iowa:**  
579 4th St. N.W.  
Sioux Center, IA  
USA 51250  
Tel (800) 845-5589  
Fax (712) 722-1128